

**RULES**

1. Exhibitors entry fees 20p per exhibit. Exhibitors may only make one entry per class. Children are encouraged to enter any class.
2. Closing date for entries, Wednesday 4<sup>th</sup> September 2013.
3. All produce must have been grown by the exhibitor, pot plants must have been in the possession of the exhibitor for at least three months.
4. All entries in the cooking class must be home made.
5. Exhibits can be accepted between 7.30 p.m. and 9.00 p.m. on Friday 6<sup>th</sup> September or between 9.00 a.m. and 10.30 a.m. on Saturday 7<sup>th</sup> September.
6. No-one will be allowed in the show whilst entries are being judged, except those appointed by the Committee.
7. 3 prizes will be awarded for 5 or more entries. 2 prizes will be awarded for 3-4 entries. 1 prize will be awarded for less than 3 entries. A Highly Commended Prize may be awarded in Section A.
8. Prize Money: 1<sup>st</sup> Prize 50p, 2<sup>nd</sup> Prize 40p, 3<sup>rd</sup> Prize 30p.
9. Points for Cups will be awarded as follows: 5 points - 1<sup>st</sup> place, 4 points - 2<sup>nd</sup> place, 3 points - 3<sup>rd</sup> place, 2 points - Highly Commended.
10. All protests must be taken to the Secretary by 3.30 p.m. accompanied by 50p which is refundable if complaint is upheld.
11. All exhibits will be at the sole risk of the owners.
12. All exhibits to remain staged until 4.00 p.m. after which time all produce not removed by 4.30 p.m. will be sold for the benefit of Kettleburgh VPA funds.
13. No produce may be sold privately in the Hall.
14. The Judges decision will be final.

**KETTLEBURGH TRAY RULES AND REGULATIONS**

1. The Kettleburgh Tray is for a collection of three types of vegetables from the following eight. The quantity of each vegetable is given in brackets: Carrots (3), Cauliflower (2), Onions (3), Peas (6 pods), Parsnips (3), Potatoes (3), Runner Beans (6 pods), Tomatoes (6). Each type of vegetable will be judged out of a total of 20 points. This is split into three sections as follows: 7 points for size, shape and colour; 7 points for condition; 6 points for uniformity. The overall mark will therefore be out of a total of 60.
2. All vegetables are to be displayed for effect. The vegetables must be displayed within an area of 45cm x 60cm (18" x 24") without bending any part of them. No part of any exhibit should exceed the size of the tray. A tray or board measuring 45cm x 60cm (18" x 24") can be used to display the vegetables or the area can be simply marked on the staging. Where a tray has a lip or edge, it is the internal measurements that must not exceed 45cm x 60cm (18" x 24").

Communications and Entry Forms to the Secretary  
 Mrs C Norman, 2 Redroofs, The Street Kettleburgh (01728 724372)  
 Mr P Arbon, 1 The Oaks, Brandeston

**KETTLEBURGH VILLAGE PRODUCE SHOW 2013 ENTRY FORM**

ENTRY FEE 20p PER CLASS

Class No.	Class No.	Class No.	Class No.	Class No.
.....	.....	.....	.....	.....
.....	.....	.....	.....	.....
.....	.....	.....	.....	.....
.....	.....	.....	.....	.....
.....	.....	.....	.....	.....
.....	.....	.....	.....	.....
.....	.....	.....	.....	.....
.....	.....	.....	.....	.....

TOTAL ENTRY FEE ENCLOSED \_\_\_\_\_ @ 20p = \_\_\_\_\_

I HEREBY DECLARE THAT THE ABOVE EXHIBITS HAVE BEEN GROWN OR MADE BY ME, EXCEPT WHERE OTHERWISE ALLOWED.

Signed: .....Print Name .....

Address: .....

.....

Date: .....

**IMPORTANT: THE CLOSING DATE FOR ENTRIES IS  
 WEDNESDAY 4<sup>th</sup> September 2013**

**NO LATE ENTRIES ACCEPTED**

## **SECTION D - FLOWERS**

For The Brown Perpetual Challenge Cup (Open) and The Balaam Cup (Open)  
A trophy in memory of Mr G Goddard will be given for the Best Rose Exhibit

51. 3 Stems of Floribunda (Cluster) Roses
52. 3 Hybrid Tea (Single Stem) Roses
53. 3 Dahlias over 12½cm (5")
54. 3 Stems Annuals (one kind) (Grown from seed sown in 2013)
55. 3 Dahlias under 12½cm (5")
56. 3 Stems Perennials (one kind) (Not already specified in any other class)
57. Pot plant in flower
58. Pot Plant (Foliage)
59. 3 Stems Chrysanthemums (spray)
60. 3 Gladioli
61. 4 French Marigolds
62. 5 Fuchsia (Individual blooms, any number of varieties) displayed in a dish
63. One vase mixed foliage for all round effect (max width 60cm (2ft)
64. Kettleburgh Vase Class (Open)  
See conditions on earlier page
65. A floating floral arrangement in a glass bowl

## **SECTION E – WINE/GIN**

66. One bottle wine (any colour)
67. One bottle fruit gin (any size bottle)

## **SECTION F - CHILDREN**

68. A colouring of the Kettleburgh Man – outline provided
69. A miniature garden on a plate
70. An edible necklace

## **SECTION G – PHOTOGRAPHY**

71. The Wonders of Nature
72. Playtime

3. A black cloth is permitted, and the tray may be painted. Parsley is allowed for garnishing, but no other foliage or accessories such as plates, sand, rings, etc will be allowed. Onion tops may be tied or whipped using raffia or string.

4. The winner of the Kettleburgh Tray Class will receive a £3.00 prize, the runner up £2.00 and the third place £1.00.

### **Notes for Exhibitors and Judges:**

Carrots and Parsnips must have foliage trimmed back to 7.5cm (3"). Peas and beans must be displayed with some stalk attached. Tomatoes must be displayed with calyces.

## **KETTLEBURGH VASE RULES AND REGULATIONS**

1. The Kettleburgh Vase class is for a mixed vase of flowering stems containing a total of between 5 and 10 stems, taken from a MINIMUM of two different kinds of plants. Please note that it is two different KINDS of plants; two varieties of the same plant are NOT two kinds.

2 The display will be judged out of a total of 35 points, split into: 25 points for the colour, form, condition, quality and freshness of the flowers on display, and 10 marks for the overall presentation and effect of the plants in the vase. The vase will be viewed from all directions. Judging of the flowers should be to the normal rules used for other classes.

3. Stems used in the display must be showing flowers only, no seed heads or berries are allowed.

4. The vase can be any shape and size and made from any materials, but must be in proportion to the display. No marks are awarded for the vase itself.

5. No accessories whatsoever - such as bows and additional foliage - will be allowed. Foliage which is growing naturally from the flowering stem, and still attached to that stem, will be allowed. Packing material - including Oasis - to keep the stems in place is allowed.

6. The winner of the Kettleburgh Vase class will receive a £3.00 prize, the runner up £2.00 and the third place £1.00.

**Notes For Exhibitors and Judges:** Flowering stems can be taken from ANY flowering plant. The different kinds of plants need to be taken from different genera. For instance, pinks, carnations and sweet williams - which are all dianthus - would not be classed as different kinds. A vase is any vessel that can be used to hold cut flowers and which is taller than it is wide.

NO LATE ENTRIES ACCEPTED

## SECTION A - VEGETABLES

For The Hill Perpetual Challenge Cup (Open)  
The Pulham Challenge and Runners-Up Trophies (Kettleburgh Entries Only)

1. 5 Potatoes (White)
2. 5 Potatoes (Coloured)
3. 2 Lettuces
4. 5 Onions (Sets)
5. 3 Red Beet (Globe)
6. 2 Courgettes
7. 5 Runner Beans
8. 5 Shallots
9. 2 Cabbages (Green)
10. 3 Carrots
11. 2 Leeks
12. 5 Tomatoes
13. 2 Sweet Peppers
14. 2 Parsnips
15. 2 Cucumbers
16. 5 French Beans (Dwarf)
17. Any other vegetable (2 of any vegetable not mentioned in above schedule)
18. A truss of small fruited or cherry type Tomatoes
19. Mixed bunch of herbs in water
20. The longest Runner Bean
21. The heaviest Marrow
22. 3 heaviest Potatoes
23. Kettleburgh Tray Class (Open) - See conditions on previous page.

### NOVELTY CLASSES (prizes awarded but no points)

- A. The largest garden snail                      B. The holiest Hosta leaf

## SECTION B - COOKERY

For The Mitchell Challenge Cup (Open) and the Levy Cup (Kettleburgh Entries Only)

Please exhibit on paper plates (plates will be provided)

26. 4 Flapjacks
27. 4 Suffolk Rusks (2 tops and 2 bottoms)
28. 4 Fruit Scones
29. Victoria Sandwich (jam filling, caster sugar on top)
30. 4 Cheese Scones **THIS CLASS OPEN TO MEN ONLY**
31. 6 Cheese Straws
32. 4 Chocolate Chip Cookies
33. A Shortbread Round
34. 4 pieces of Chocolate Brownie
35. A glass of homemade fruit smoothie
36. A Jar Jelly - any size jar
37. 1 Jar Marmalade )
38. 1 Jar Soft Fruit Jam )
39. 1 Jar Stone Fruit Jam )                      A Jar has to be not less than
40. 1 Jar Chutney )                                      350 gram or 12oz size
41. 1 Jar Lemon Curd )

## SECTION C - FRUIT

For The Margaret Norman Trophy (Open)

45. 5 Apples (Dessert)
46. 5 Apples (Cooking)
47. 5 Plums
48. Plate of 10 Raspberries
49. Plate of 10 Cultivated Blackberries
50. Plate of Any Other Fruit

NO LATE ENTRIES ACCEPTED

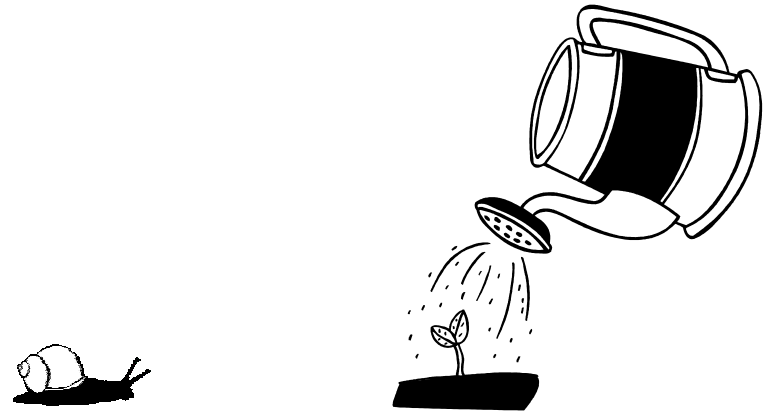
**KETTLEBURGH VILLAGE PRODUCE ASSOCIATION**

**Annual Produce and Flower Show**

**Kettleburgh Village Hall on**

**Saturday 7<sup>th</sup> September 2013 at 2.30 p.m.**

**LARGE PRINT VERSION AVAILABLE FROM  
CLAIRE NORMAN ON 01728 724372  
IF REQUESTED**



**Admission: Adults 50p Children 20p**

**Presentation of Prizes at 4.30 p.m.**

**Teas and Raffle**

**Auction of Produce and Draw following Presentation of Prizes**

**Many thanks to Mr L Swann of Swann's Nursery at Bromeswell for  
the use of the photocopier to produce this schedule**

**NO LATE ENTRIES ACCEPTED**